

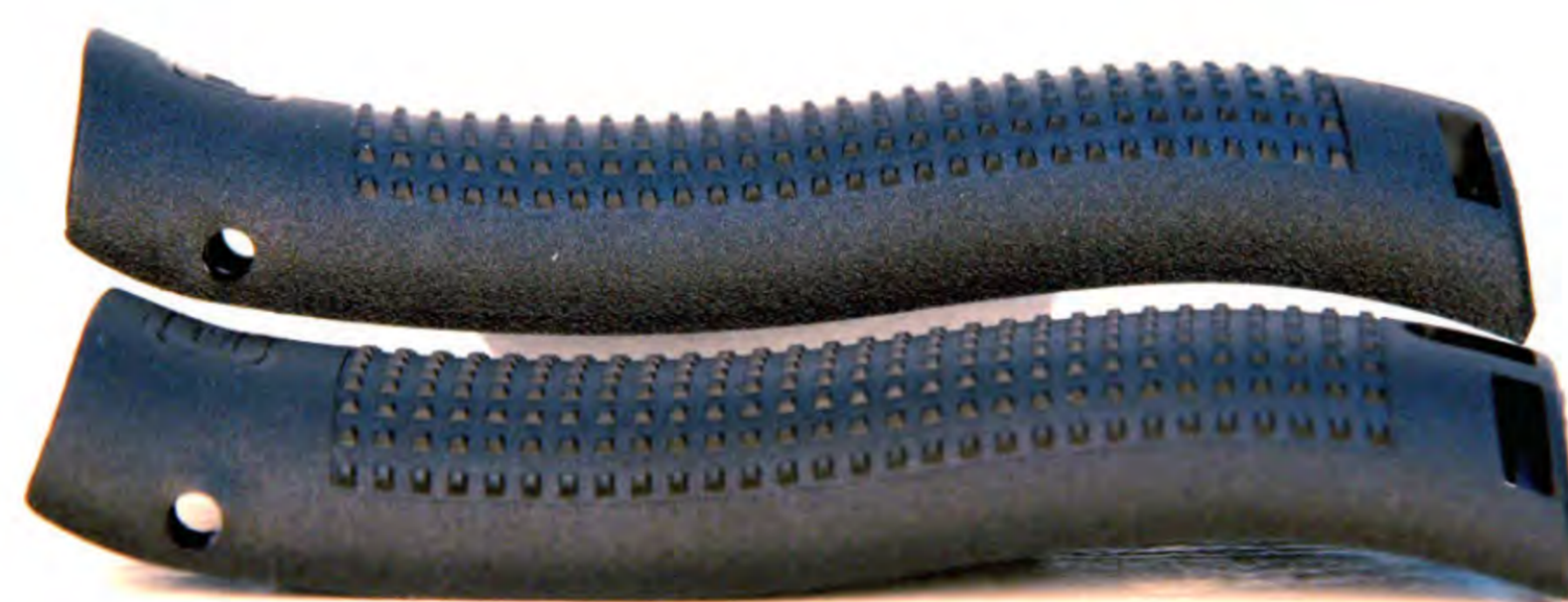
GLOCK G22 GEN4 40 S&W, \$649
GUN TESTS GRADE: B+

The Gen 4 grip system should make this gun more appealing to a wider variety of shooters.



SPECIFICATIONS

OVERALL LENGTH	8.0 IN.
BARREL LENGTH.....	4.5 IN.
SIGHT RADIUS.....	6.3 IN.
OVERALL HEIGHT.....	5.1 IN.
FRONT STRAP HEIGHT	2.4 IN.
BACK STRAP HEIGHT.....	3.4 IN.
WEIGHT LOADED (15 RDS. 180-GR.)	34.8 OZ.
WEIGHT UNLOADED	22.8 OZ.
CAPACITY	15+1
MAXIMUM WIDTH.....	1.2 IN.
GRIP THICKNESS (MAX).....	1.2 IN.
GRIP CIRCUMFERENCE	5.9/6.05/6.3 IN.
FRAME.....	BLACK POLYMER
BARREL.....	STEEL
SLIDE	BLACK-TENIFER STEEL
GRIP	POLYMER FINGER GROOVES
TRIGGER PULL WEIGHT DOUBLE ACTION.....	6.5 LBS.
TRIGGER SPAN DOUBLE ACTION.....	2.8/2.9/2.95 IN.
WARRANTY	LIMITED LIFETIME
TELEPHONE	(770) 432-1202
WEBSITE OR EMAIL	WWW.GLOCK.COM



Above: A pair of alternate backstraps, sizes large and medium, was supplied, but the shooter actually had three choices. Option number one was the backstrap supplied as one piece with the frame. Extra backstraps are slid over the original profile and pinned into place, producing different grip angles.



Above: The G22 pistols offer a 2-inch-long rail, but only one crosshatch. The tips of the G22 pistols are tapered for easier concealment and smoother holstering.

Right: The new texture, also found on the RTF models, looked more abrasive than it actually was. It helped us hold on in hot weather, but we found it was most beneficial when shooting with gloves on, such as many patrolmen wear. Note the vertical ridge at the rear corner of the grip. That's not just to create the illusion of a side panel. That groove holds the alternate backstraps in place.